

**ALLDAY
& MILLER**



Clammas Way, Uxbridge, UB8 3AN
£650,000

 3  2  2  D



Clammas Way, Uxbridge, UB8 3AN

£650,000

- Three Bedrooms
- Large Private Rear Garden
- Off Street Parking
- Detached
- Elizabeth Line
- Two Bathrooms
- Two Reception Rooms
- Planning Approved to Extend
- Sought After Location
- Close to Uxbridge Town Centre

Description

The versatile accommodation currently provides, hallway, living room, dining room, study/bedroom four, two bathrooms on the ground floor, one with a bath and one with a shower, a good sized kitchen leading onto the garden completes the ground floor.

The first floor has two well proportioned double bedrooms with built in wardrobes and eave storage space.

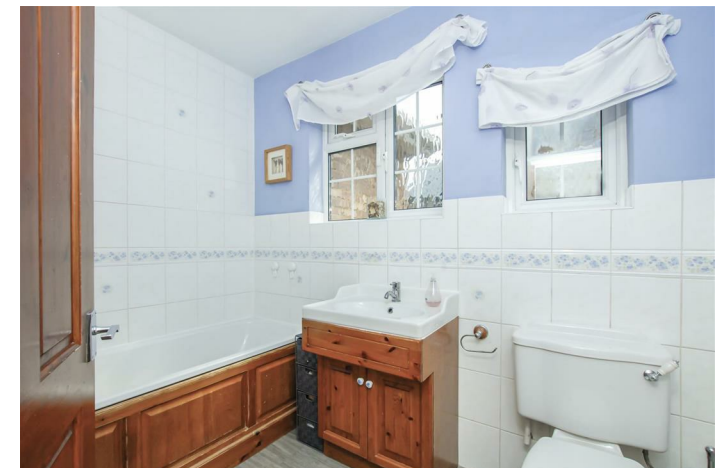
Outside

The front enjoys off street parking.

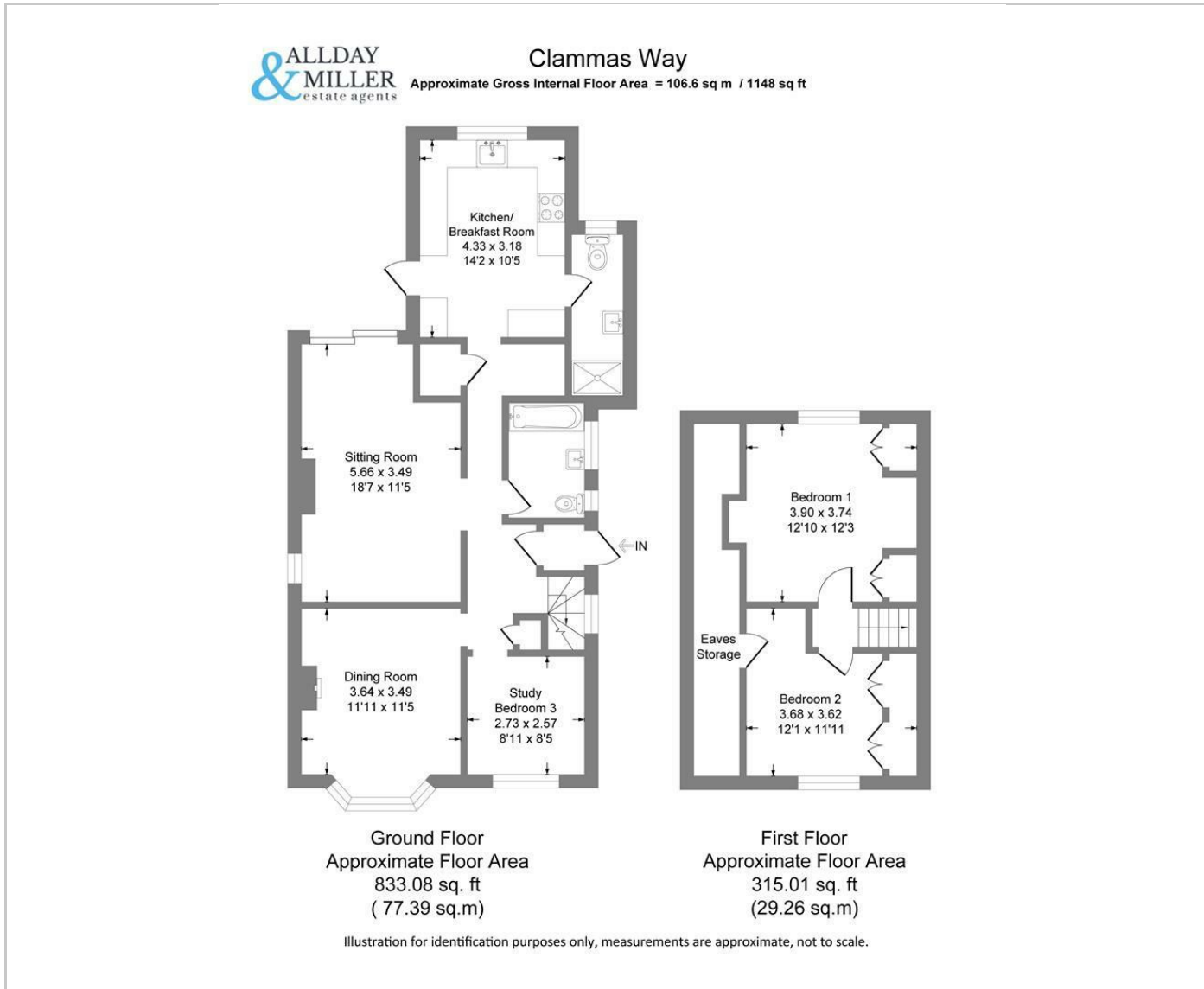
The large rear garden has grass laid to lawn with a patio area which leads directly into a storage shed.

Situation

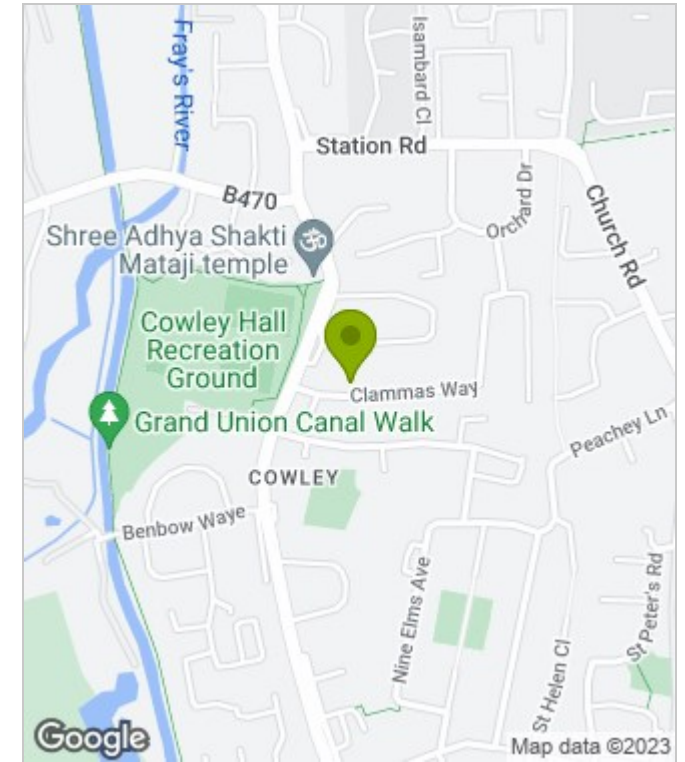
Clammas Way is a well regarded and sought after residential location, being within close proximity of Uxbridge town centre providing multiple shopping facilities, restaurants, bars and underground station with its Metropolitan and Piccadilly line services to the heart of the capital. For the motorist the A40 is a short drive away giving access to London and the M25. The Elizabeth Line in West Drayton is also in close locality.



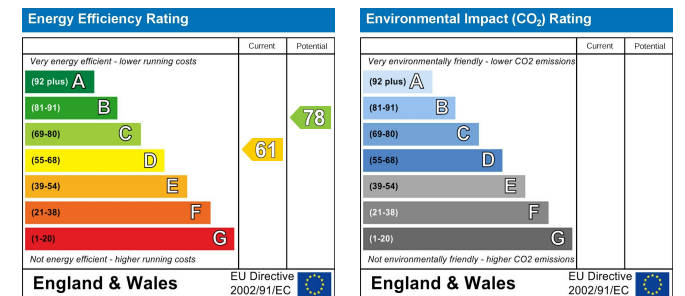
Floor Plans



Area Map



Energy Performance Graph



These particulars, whilst believed to be accurate are set out as a general outline only for guidance and do not constitute any part of an offer or contract. Intending purchasers should not rely on them as statements of representation of fact, but must satisfy themselves by inspection or otherwise as to their accuracy. No person in this firm's employment has the authority to make or give any representation or warranty in respect of the property.